



**SR BIOSYSTEM PVT.LTD.  
309, Vardhman Dee Cee Plaza,  
Plot No. – 6, Sector – 11,  
Dwarka, New Delhi – 110075**

**[Contactus@srbiosystempl.com](mailto:Contactus@srbiosystempl.com)  
[info@srbiosystempl.com](mailto:info@srbiosystempl.com)  
[srbiosystempl@hotmail.com](mailto:srbiosystempl@hotmail.com)  
[www.srbiosystempl.com](http://www.srbiosystempl.com)**



# Company Profile

- SR Biosystem Pvt Ltd. is newly born company started from Jan 2006
- SR Biosystem Pvt. Ltd. started by a team of enthusiastic & self motivated members with aim to target all India marketing through distributors network or supporting members.
- We at SR Biosystem Pvt. Ltd. represent some of the world's best International Brands & Companies; enlightening incessantly in the field of Life Sciences, Biotechnology & Application based Research.
- *Specialty* is to fill up gaps in the area of Life Science Research.
- Worldwide customers: Biotech companies, Universities, Government Labs ,Pharmaceutical and Private labs.



# Line Of Business

- We at SR Biosystem Pvt Ltd. is presently marketing for some of the world leaders in Life Sciences Research products such as, Molecular Biology Equipments and Reagents, Protein Assays, Cell & Tissue Culture, Serum & Media and all sorts of equipments.
- Assists scientists & Researcher by offering high quality international products with innovative features that valued customers need.
- Ensure successful product delivery and customer satisfaction



# Business partners

- Analytik Jena – AG, Germany
- Micronic – Netherland
- Labogene – Denmark
- Tritec – Germany
- Niborlab – Spain
- Yamato Scientific – Japan
- Ovan – Spain
- Bellco – USA
- ITSI Biosciences – USA
- North West – USA
- Human Lab Instruments Co. - Korea



# We SR Biosystem Pvt. Ltd. Offers

- Total laboratory Instruments
- Range of Innovative sample storage tubes and accessories from Micronic.
- Thermoblock Reactors, Incubators, Shakers from Major Science.
- Kits for the isolation of Nucleic acids and Proteins from a variety of species and tissues.

# *Applications*





# Work Flow of Molecular Biology Setup

- ✔ Sample Collections
- ✔ DNA/RNA Extraction
- ✔ **A-Manual** :- DNA/ RNA Extraction with Kits
- ✔ **B-Automated** :- DNA/RNA Extraction with speed Mill / Innu pure C16
- ✔ DNA Amplification with PCR/ RTPCR
- ✔ Detection with Electrophoresis & Gel Documentation & Spectrophotometer
- ✔ For Cytogenetic & FISH tissue culture studies with Con focal Microscopy
- ✔ LIMS Software for Real Time Automated Documentation for Sample collection & Reporting .
- ✔ **(LIMS- Laboratory Information Management System)**

# Homogenizer



## SpeedMill PLUS

The SpeedMill PLUS is a highly efficient homogenization system for various starting materials used for the subsequent isolation and purification of DNA, RNA or proteins.

The homogenization process is based on an innovative mechanical principle for which a patent has been filed. This new process allows users to operate the SpeedMill PLUS continuously if necessary.

- ✔ Complete and reproducible homogenization; easily homogenizes even extremely resistant starting materials
- ✔ Efficient sample cooling during the whole preparation
- ✔ Very rapidly moving beads crush and disrupt the starting material.



# InnuPure® C12 (Automated Extraction)



The InnuPure® C12 is a new, flexible and efficient extraction system for the completely automated isolation and purification of nucleic acids.

- ✓ Nucleic acid purification robot
- ✓ Flexible and efficient extraction system
- ✓ For numerous types of starting materials
- ✓ Completely automated and compact
- ✓ Pre-programmed protocols
- ✓ Up to twelve samples in parallel
- ✓ Isolation of very pure nucleic acids
- ✓ Automatic transfer of elutes into Elution Tubes with lids
- ✓ Very rapid extraction of genomic DNA, cellular RNA, viral and bacterial nucleic acids



# Rapid PCR



- Quick-X-change block exchange system
- Automatic block recognition
- 96 well and 48 well twin-block optionally with gradient function
- Twin-blocks independently controllable
- Multiblock start- and stop-function
- Large  $\frac{1}{4}$  VGA display
- High Performance Smart Lid (HPSL) for always optimal contact p
- USB A and USB B port
- Comfortable user administration
- GLP compliant documentation of PCR runs
- Comprehensive additional software functions

# Real Time PCR



## ❖ Exceptionally speed

- ❖ *f* qTOWER – up to 10 times faster than to conventional systems
- ❖ *f* unique: qPCR with 96 samples in less than 25 min
- ❖ *f* Patented Fiber-Optic-System
- ❖ *f* Heating rates unmatched, up to 12 °C/sec and cooling rates
- ❖ up to 8 °C/sec
- ❖ *f* Read-out of 96 wells within 4 seconds, independent of number of dyes

## ❖ Significant cost-cutting

- ❖ *f* Cost-cutting up to 75 % through optimization of reaction volumes
- ❖ □ Sample consumptions from 5 till 20 µl in 96 micro plate formats
- ❖ through patented consumables
- ❖ *f* Consumables with unique energy-transfer-efficient
- ❖ *f* Remarkable time saving of the qTOWER: better use of available
- ❖ lab-capacities

❖ *f*

# Scan-Drop Nano Spectrophotometer



## ScanDrop (Nano-Volume Spectrophotometer)

- ❖ The ScanDrop® combines the easy measurement of micro liter volumes of 0.3  $\mu\text{l}$  with a standard test site for 10 mm cuvettes. By this means he is just the daily routine of a versatile device. The modular system is a single microliter of measuring instrument, a standard photometer for a 10-mm cuvette or a combination thereof as provided. Unlike other systems, no warm-up is needed. Thee extra large 5.7 "color touch screen is very user friendly and allows operation of the device independent of a computer.
- ❖ **Feature: -**
- ❖ Combination of two generations of spectrophotometer
- ❖ Measurement of micro liter volumes down to 0.3  $\mu\text{l}$
- ❖ 16 channels per CHIPCUVETTE® with fully automated measuring of up to 32 positions at path length of 0.1 or 1.0 mm
- ❖ Automated sample positioning (CHIPCUVETTE®)
- ❖ Measuring position for 10 mm cuvettes
- ❖ No evaporation
- ❖ No cross-contamination
- ❖ No carry-over effects
- ❖ Easiest sample recovery

# Multi Station



Clean Bench



Wide Work Table



Shaking Incubator



CO2 Incubator



Centrifuge



HEPA Filter



Particle meter



UV Lamp



# Multi Station

## Feature: -

### **Lab Centrifuge**

- ✔ It's designed for multi-purpose such as dividing & refining cell or blood. 24 ea of standard tubes (15ml) can be rotated at one time.

### **Shaking Incubator**

- ✔ Shaking incubator is set to mix reagents during clinical experiments. Temperature & RPM can be adjusted through the waterproof control panel.

### **Particle meter**

- ✔ Built-in particle meter to check contamination in chamber

### **CO2 Incubator**

- ✔ Co2 Incubator allows cultivation of cells, bacteria & microbes easily and rapidly.

### **Work Station**

- ✔ 99.99% HEPA Filter and UV sterilization provides pure environment. Air circulation can be regulated to be strong or weak.
- ✔ The air convection is laminar flow type (Air curtain) to cut it off from the external environment.

### **Foot Switch**

- ✔ It is designed to start & stop Centrifuge and Shaking Incubator.

### **HEPA Filter**

- ✔ It's equipped to filter 99.99% of dusts over the size



# Mobi Lab (Automated Mobile Lab)

- ▼ **Mobile detection of pathogens**

- ▼ **MobiLab**

# Pathogen detection

MobiLab. Introduction.

**MobiLab Case**



**MobiLab One**



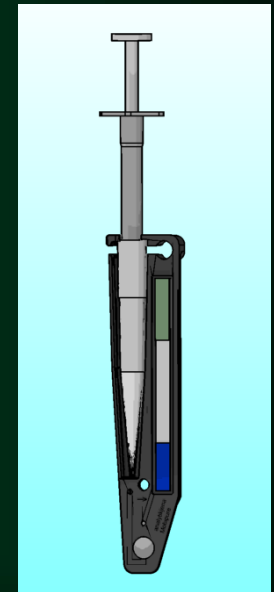
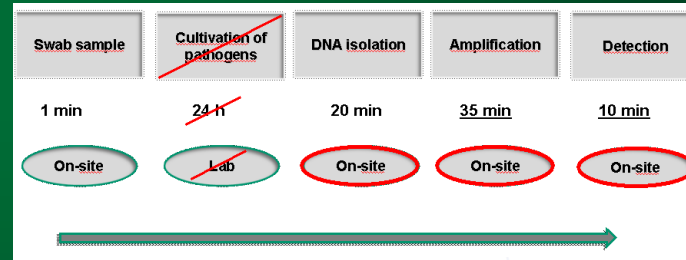
- All in One analysis platform
- Combination of thermal shaker, rapidPCR thermal cycler and detection module in one device





# Mobile pathogen detection

MobiLab. Your lab to go.



■ All out of one case.

■ Mobile. Easy. Robust. Fast.



# Extraction Kits / Reagents

## Solutions for Nucleic Acid Isolation

### **innuPREP**

- Standard products for the isolation and purification of nucleic acids

### **blackPREP**

- Optimized for complex starting materials

### **innuSPEED**

- Homogenizer

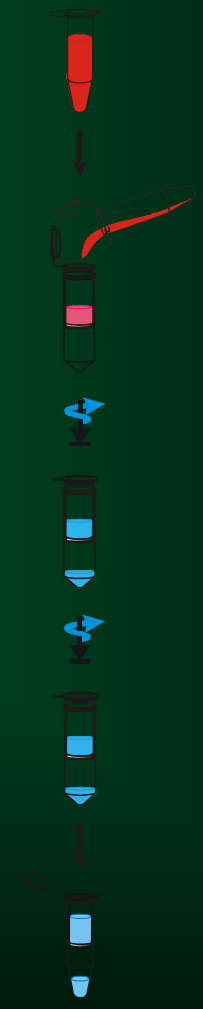
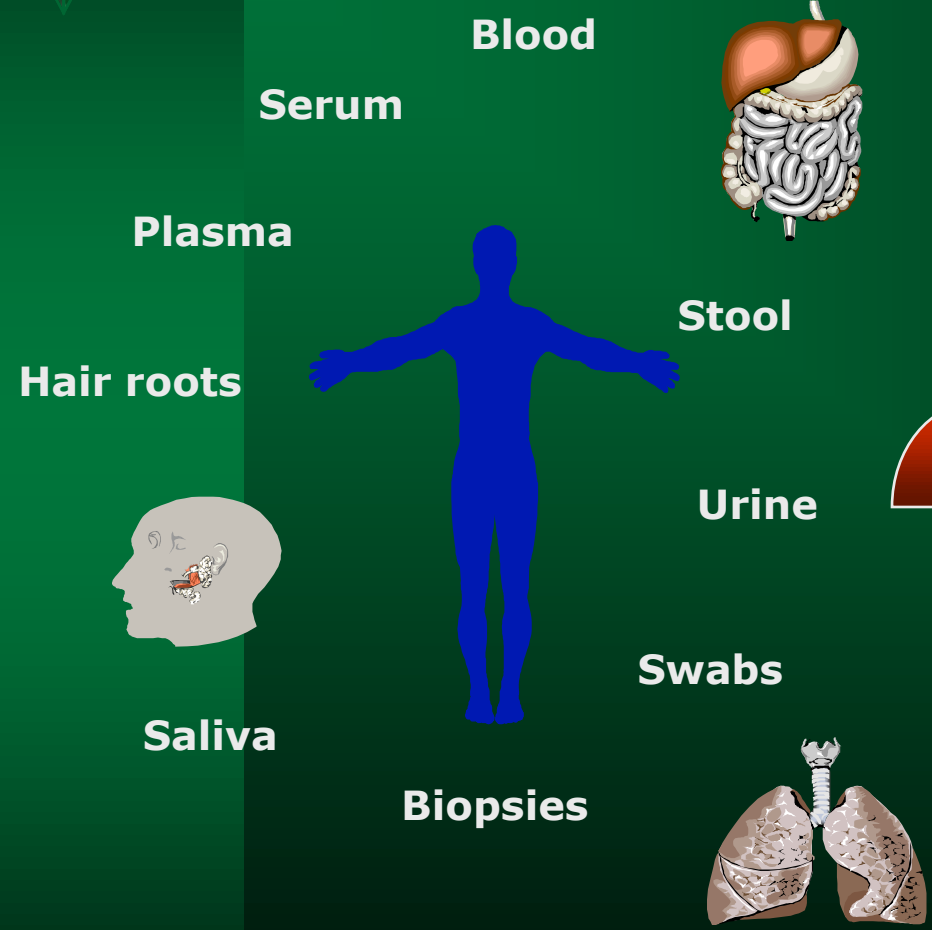
### **innuPREP - IP**

- Automatic isolation of nucleic acids



# Nucleic acid isolation

## General procedure



- **Lysis**
- **Bind**
- **Wash**
- **Elute**



# Training of Lab Operations

- ✓ Sample Handlings Steps
- ✓ Sample Extraction Steps
- ✓ Sample Detection & Analysis Steps
- ✓ Results of the Lab Reports
- ✓ Technical & Routine Maintenance Training on above for 1 to 2 weeks.



# innuPREP DNA Kits

## Starting material

### **innuPREP DNA Mini Kit**

Tissue samples (up to 50 mg)

Rodent tails (0.5 –1 cm)

Paraffin embedded tissue samples

Buccal swabs

Eucaryotic cells ( $5 \times 10^6$  cells)

### **innuPREP DNA Micro Kit**

Tissue samples (up to 5 mg)

Whole blood (up to 50  $\mu$ l)

Blood sticks

Paraffin embedded tissue samples

Eucaryotic cells (max.  $1 \times 10^6$  cells)

### **innuPREP Forensic Kit**

Blood stains ,Hairs and hair roots ,Finger nails

Stamps and envelopes ,Cigarette butts

Bubble gum

Dental floss

Swabs

Fingerprints from surfaces

Sperm stains

Barb hairs

Buccal swab

### **innuPREP Blood DNA Mini Kit**

Up to 300  $\mu$ l of fresh or frozen whole blood; stabilized with EDTA or citrate



# Our Product Users

- ✔ BARC, TIFR, IRR, KEM, HINDUJA, HOFKINS
- ✔ HOECHST, JOHNSON & JOHNSON : BOMBAY
- ✔ IIS, ASTRA RESEARCH CENTRE, NIMHANS : BANGALORE
- ✔ AIIMS, JNU, ICGEB, CSIR,IARI : DELHI
- ✔ CCMB, ICRISAT : HYDERABAD
- ✔ CMC : VELLORE
- ✔ KGMC, SGPGI, CDRI, NBRI,ITRC,NBFGR :  
LUCKNOW :
- ✔ PGI, PUNJAB UNIVERSITY, IMTECH, NIPER : CHANDIGARH
- ✔ IVRI ,CARI : BARELLEY,
- ✔ MUKTESH-WAR
- ✔ HINDUJA HOSPITAL, JASLOKA HOSPITAL : MUMBAI
- ✔ AMU : ALIGARH
- ✔ DMC, CMC, OSWAL HOSPITAL : LUDHIANA
- ✔ IICB, ICMR : CALCUTTA
- ✔ RAU : BIKANER
- ✔ BHU,IIVR : Varanasi
- ✔ NBAIM : Maunath Bhanjan



▼ Thanks for your kind attention.